



P2MMC Windows Driver

The P2MMC can use one of two Windows drivers

1) Midi Class: This is the simplest driver to use as it windows is supplied with this driver fitted. However on XP the P2MMC will work correctly but all midi interfaces will be shown as "USB Audio Device", installing the p2mmc.inf driver will change the name so as to display P2MMC.

2) Nuendo Driver: Some devices stop the Midi Class driver from working correctly (We have seen this problem on RME).

The P2MMC is supplied using the Class driver by default.

To use the Nuendo Driver you need to do two things

1) Download and install the winusb-mididriver from our web site (Appendix: A)

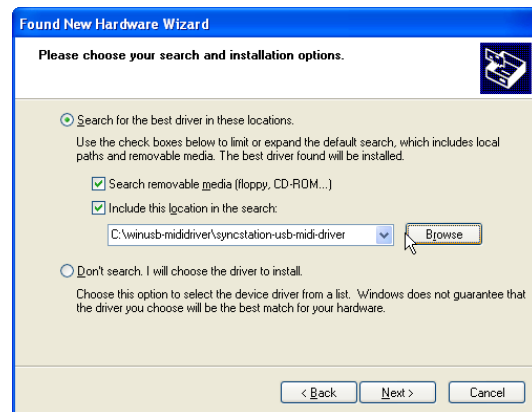
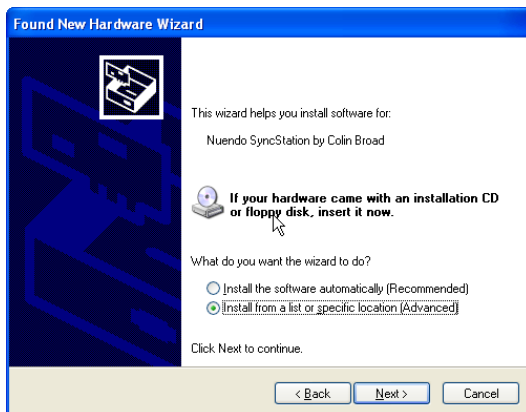
2) Use another computer to select the Nuendo driver on the P2MMC-USB using the P2MMC setup program. Note: The Class Driver will continue to run until the P2MMC is disconnected. The Nuendo driver will run the next time the P2MMC is connected.

The driver selection is in the Advanced section of the setup program and highlighted here.



Appendix A: Installing winusb-mididriver on Windows XP

- 1) Download from our website and extract to a local directory
<http://www.colinbroad.com/cbsoft/P2MMC2/p2mmc2.html>
- 2) Switch the P2MMC-USB to use the Nuendo Driver using the configuration tool as described above
- 3) Disconnect the P2MMC-USB and close the P2MMC Configuration Program
- 4) Reconnect the P2MMC-USB
- 5) The Found New Hardware Wizard will be displayed, Select "No, not this time" and click Next
- 6) Select "Install from a list or specific location (Advanced)" and Click Next
- 7) Select the driver directory
- 8) Click next and the driver will install



CB Electronics

Loddonside, Lands End House, Beggars Hill Road, Charvil, Berkshire, RG10 0UD, UK
Tel +44 (0) 1189 320345 Fax +44 (0) 1189 320346
<http://www.colinbroad.com> E-mail Support@colinbroad.com